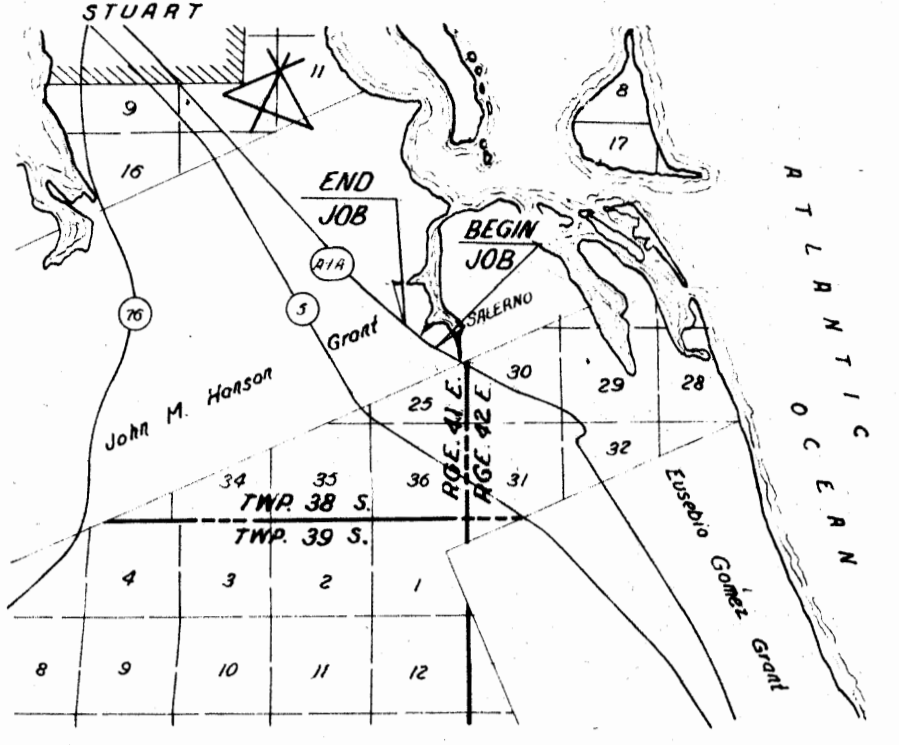


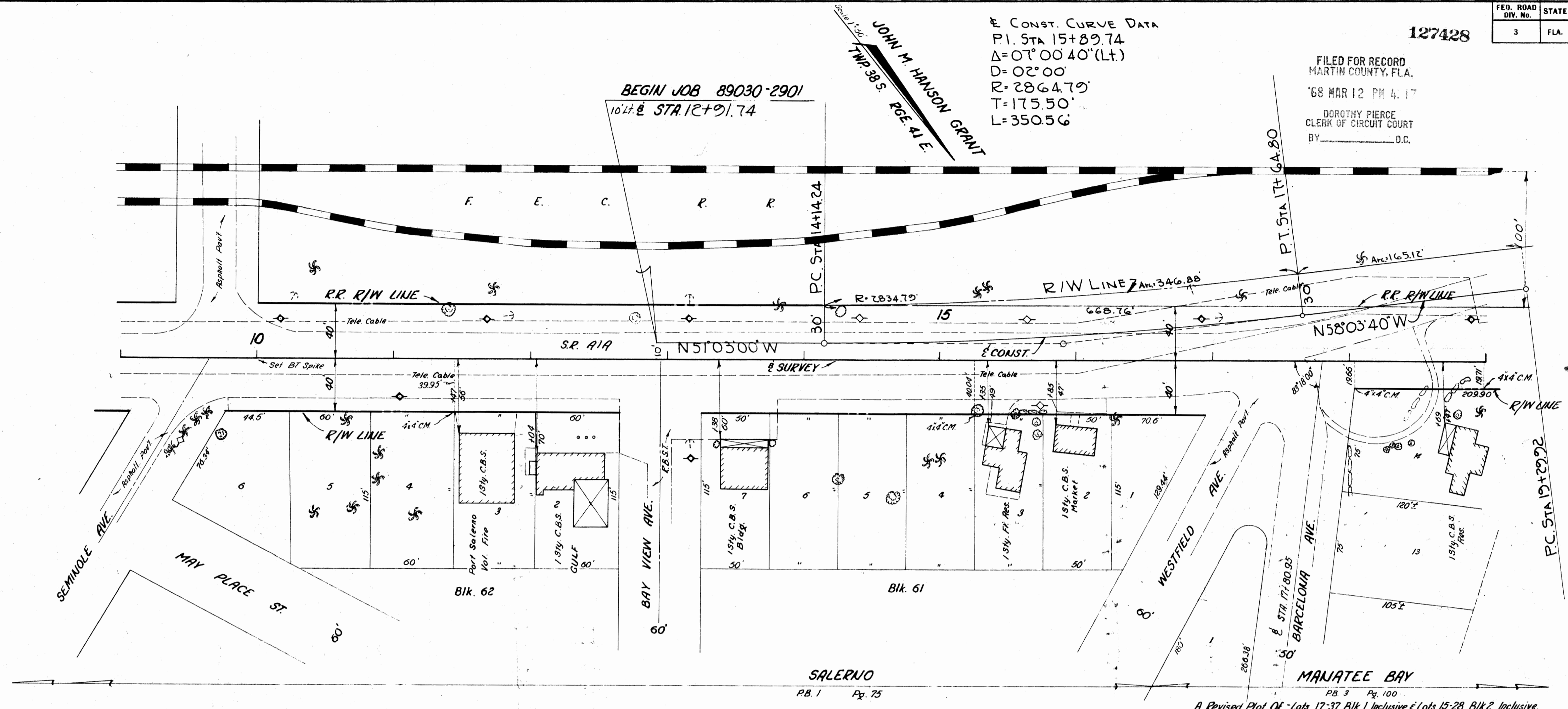
127428

FILED FOR RECORD
MARTIN COUNTY, FLA.
'68 MAR 12 PM 4.17
DOROTHY PIERCE
CLERK OF CIRCUIT COURT
BY _____ D.C.

E CONST. CURVE DATA
P.I. STA 15+89.74
Δ=07°00'40"(LT.)
D=02°00'
R=2864.79'
T=175.50'
L=350.56'



LOCATION MAP
SCALE 1/2" = 1 MILE



SALERNO
PB. 1 Pg. 75

MARIATTE BAY
PB. 3 Pg. 100

A Revised Plot Of Lots 17-37, Blk. 1 Inclusive & Lots 15-28, Blk. 2 Inclusive.

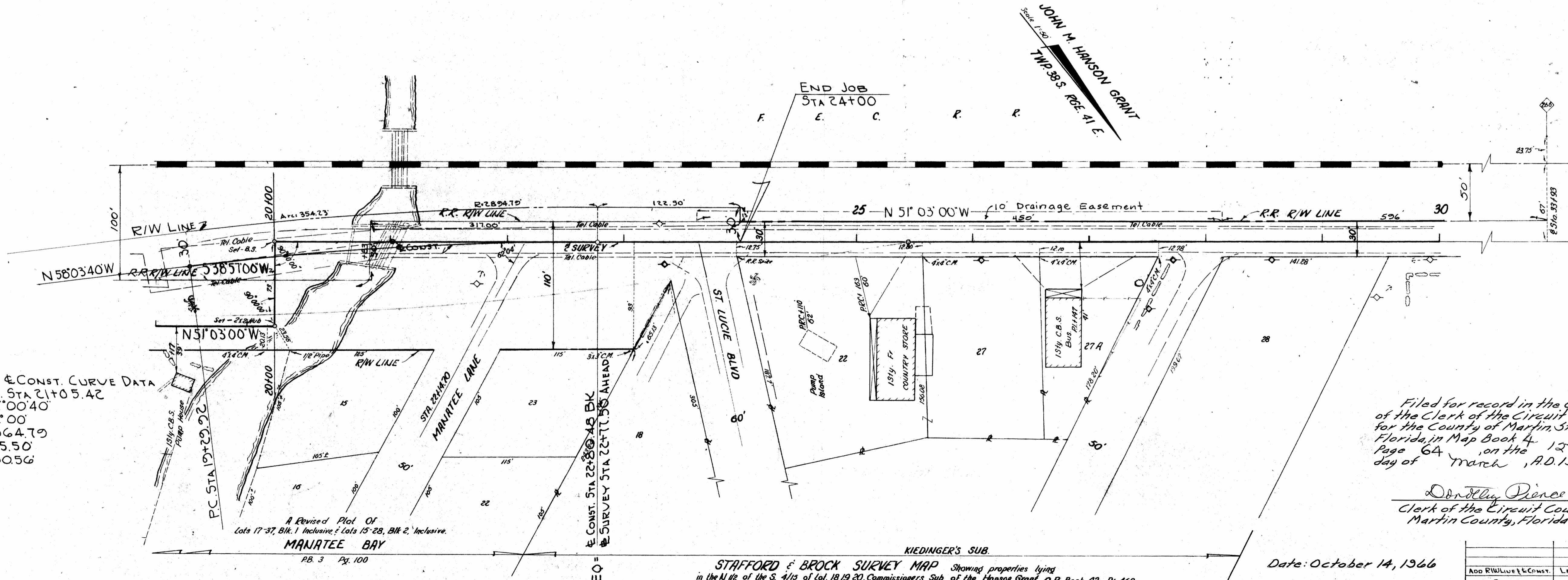
We, John W. Cashin, as Executive Director of the State Road Department of the State of Florida, and F. K. Strickland, as Secretary of the State Road Department of the State of Florida, do hereby certify that this map is the Official Map of Location and Survey of a portion of Section 89030, designated as part of State Road A-1-A in Martin County, Florida. Said portion of Section 89030 including curve revision in John M. Hanson Grant, Township 38 South, Range 41 East.

Prepared and adopted by the State Road Department of the State of Florida under provisions of Section 335.02, Florida Statutes of 1955.

John W. Cashin
Executive Director, State Road Department

Attest: *F. K. Strickland*
Secretary, State Road Department

Approved: *Bill L. Oate*
Engineer of Rights of Way



E CONST. CURVE DATA
P.I. STA 21+05.42
Δ=07°00'40"
D=02°00'
R=2864.79'
T=175.50'
L=350.56'

END JOB
STA 24+00

JOHN M. HANSON GRANT
TWP. 38 S. RGE. 41 E.

A Revised Plot Of
Lots 17-37, Blk. 1 Inclusive & Lots 15-28, Blk. 2, Inclusive.
MARIATTE BAY
PB. 3 Pg. 100

E CONST. STA 22+80.45 BK
E SURVEY STA 22+11.50 AHEAD

STAFFORD & BROCK SURVEY MAP
Showing properties lying
in the 1/4 of the S. 1/4 of Lot 18, 19, 20, Commissioners Sub. of the Hanson Grant, C.R. Book 42, Pg. 460

Filed for record in the Office
of the Clerk of the Circuit Court
for the County of Martin, State of
Florida, in Map Book 4, 12th
Page 64, on the
day of March, A.D. 1968.

Dorothy Pierce
Clerk of the Circuit Court
Martin County, Florida

Date: October 14, 1966

STATE OF FLORIDA STATE ROAD DEPARTMENT			
LOCATION MAP			
STATE ROAD NO. A-1-A		MARTIN COUNTY	
BY	DATE	APPROVED BY	DATE
Redtor	7-66	<i>John W. Cashin</i>	9-1-66
TRACED	1-30-68	8-06	
CHECKED			
COMPARED			
INDEXED			
REVISION	BY	DATE	

SECTION. 89030-2901

SHEET 1 OF 1